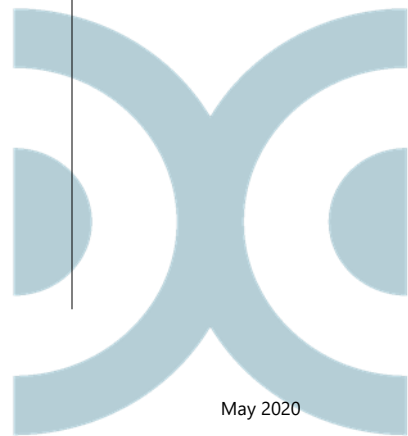
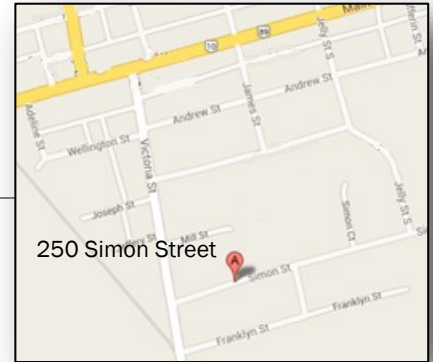


Simon Terrace **250 Simon Street** **Shelburne, Ontario**

Apartments for Seniors
Transitioning to Smoke-free
April 1, 2017



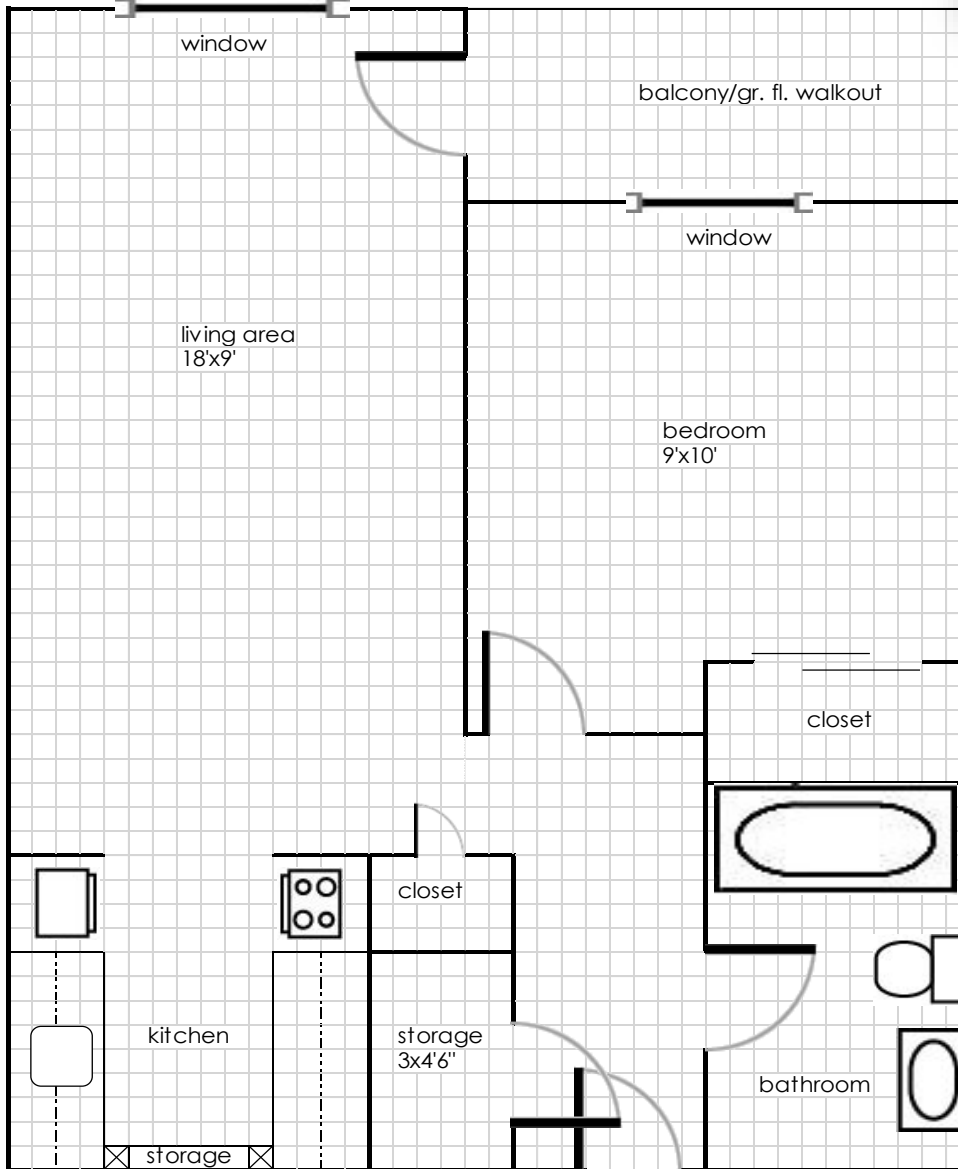


Sample Apartment

1 bedroom unit

250 Simon Street, Shelburne, Ontario L9V 3R1

Scale: 1 square:1/2 ft Approximately 480 square feet



Measurements are approximate; all apartments vary slightly. Modified units available.



Building Amenities:

- Secure building access
- Common room
- One-bedroom balcony and walk-out suites
- Utilities, stove and refrigerator included
- Elevator
- On-site coin laundry
- Parking for tenants

Shelburne Amenities:

- Mel Lloyd Centre (167 Centre Street)
 - Medical clinic
 - Senior's groups
 - Dufferin County Community Support Services
 - Other resources and services
- 2 grocery stores (delivery may be available)
- Pharmacies
- Local churches and service clubs
- Dentists and optometrists
- Grace Tipling Concert Hall
- Shelburne Public Library
- Local festivals and events
- Centre Dufferin Recreation Centre
- Local Restaurants